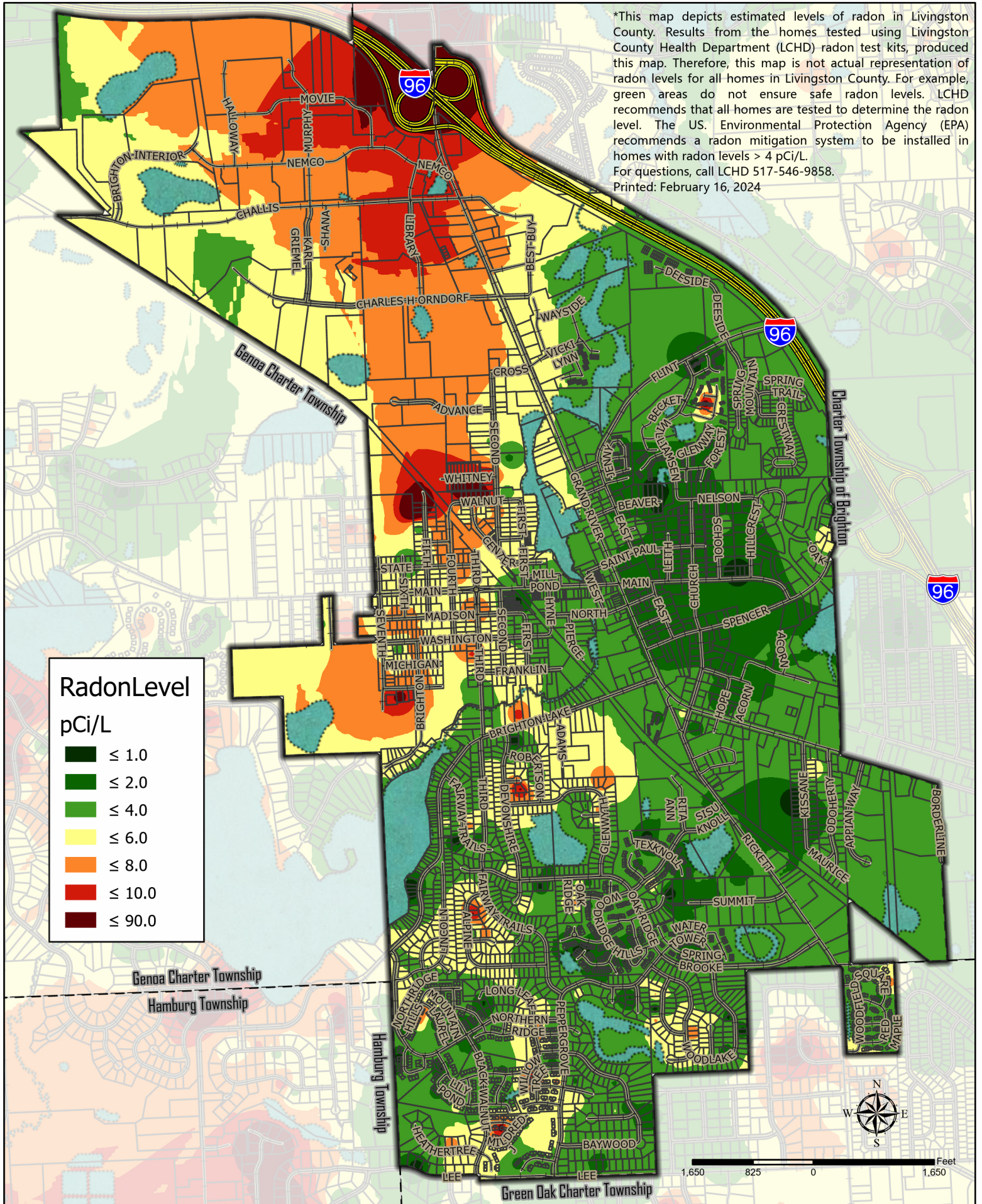


Livingston County, Michigan
Information Technology Department
G.I.S. Division 517.548.3230

*Estimated Radon Levels in Brighton Township

*This map depicts estimated levels of radon in Livingston County. Results from the homes tested using Livingston County Health Department (LCHD) radon test kits, produced this map. Therefore, this map is not actual representation of radon levels for all homes in Livingston County. For example, green areas do not ensure safe radon levels. LCHD recommends that all homes are tested to determine the radon level. The US. Environmental Protection Agency (EPA) recommends a radon mitigation system to be installed in homes with radon levels > 4 pCi/L. For questions, call LCHD 517-546-9858. Printed: February 16, 2024



RadonLevel

pCi/L

- ≤ 1.0
- ≤ 2.0
- ≤ 4.0
- ≤ 6.0
- ≤ 8.0
- ≤ 10.0
- ≤ 90.0

Genoa Charter Township
Hamburg Township

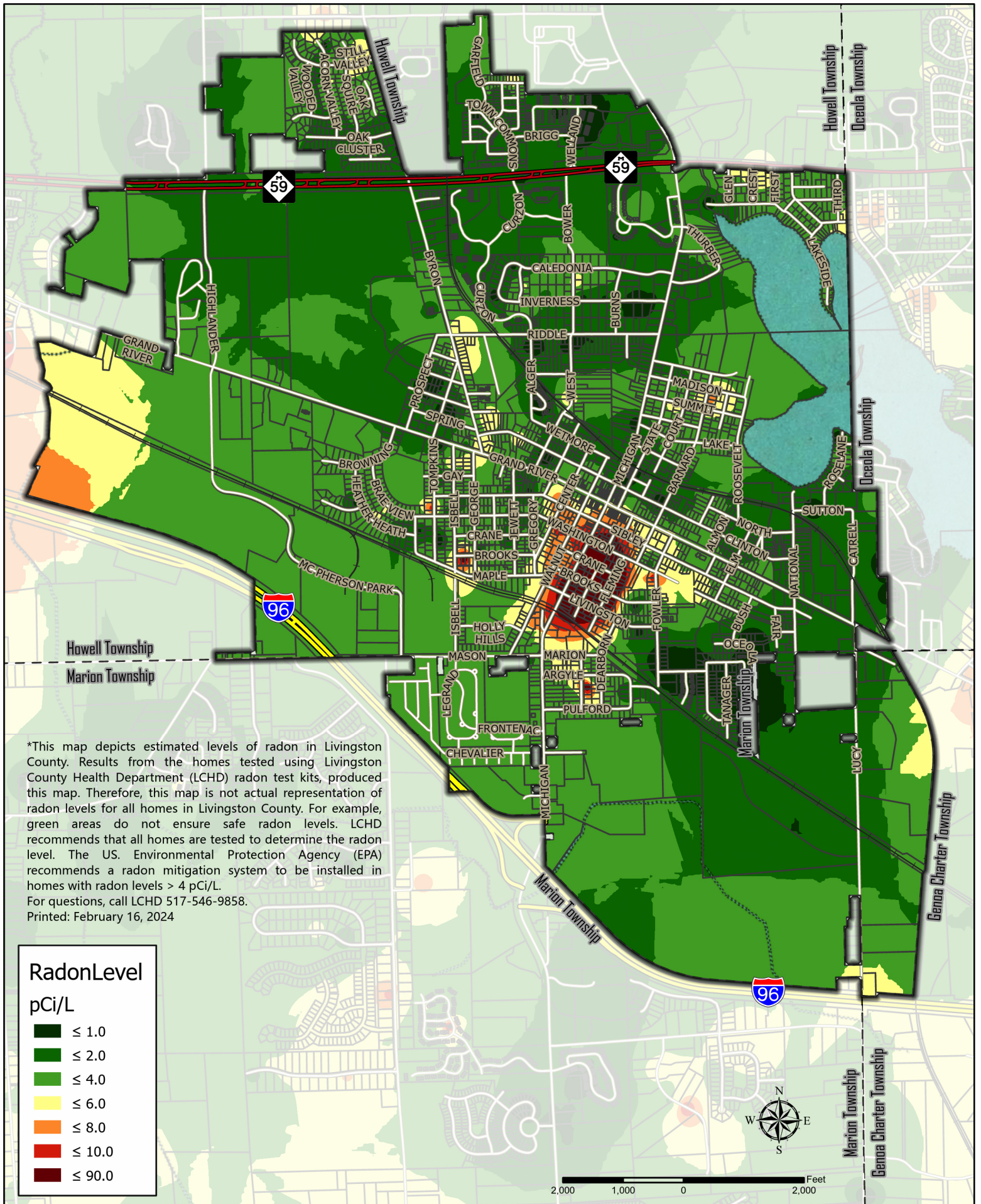
Hamburg Township

Green Oak Charter Township



Livingston County, Michigan
Information Technology Department
G.I.S. Division 517.548.3230

*Estimated Radon Levels in City of Brighton

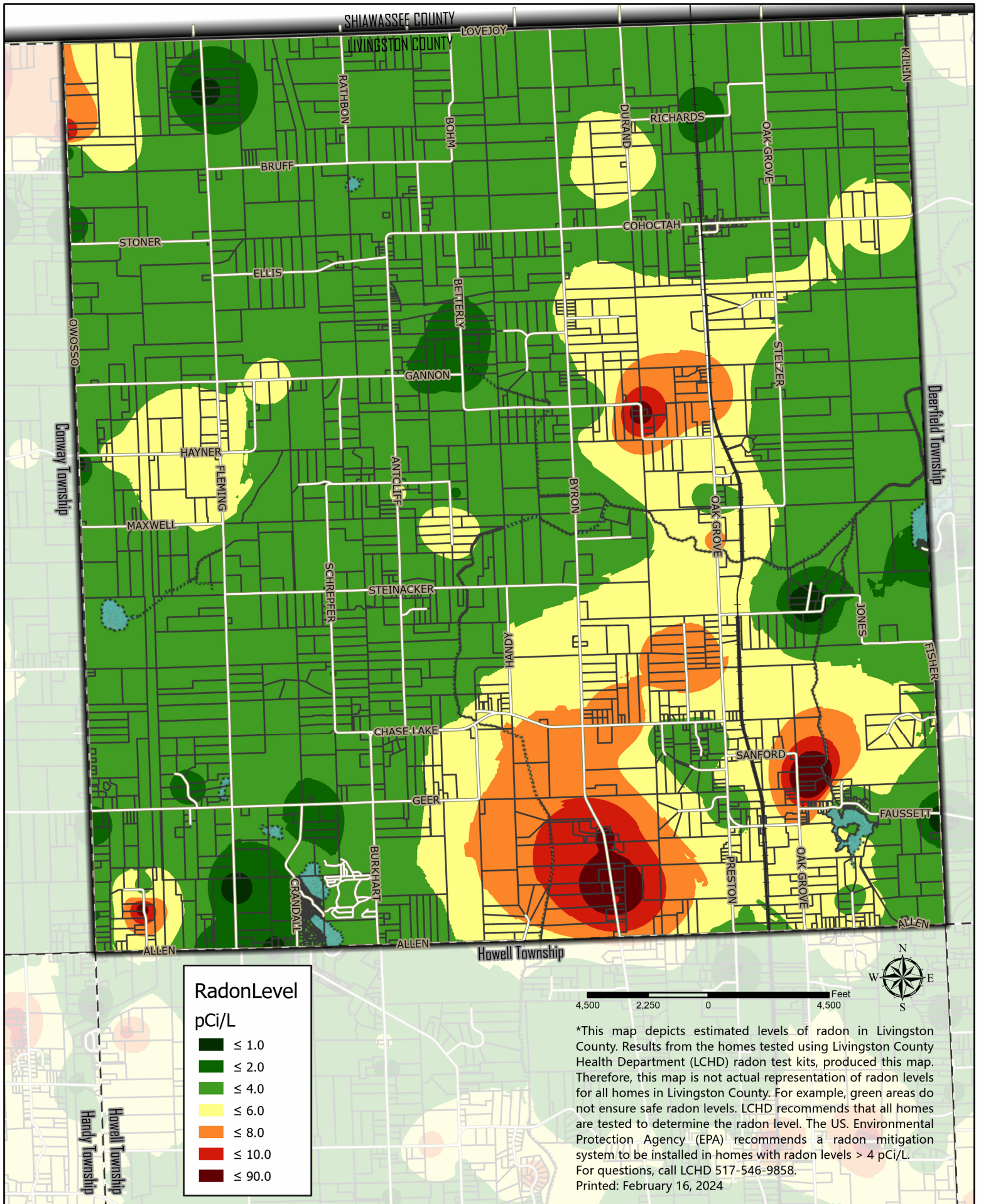


*This map depicts estimated levels of radon in Livingston County. Results from the homes tested using Livingston County Health Department (LCHD) radon test kits, produced this map. Therefore, this map is not actual representation of radon levels for all homes in Livingston County. For example, green areas do not ensure safe radon levels. LCHD recommends that all homes are tested to determine the radon level. The US. Environmental Protection Agency (EPA) recommends a radon mitigation system to be installed in homes with radon levels > 4 pCi/L.
For questions, call LCHD 517-546-9858.
Printed: February 16, 2024



Livingston County, Michigan
Information Technology Department
G.I.S. Division 517.548.3230

*Estimated Radon Levels in City of Howell

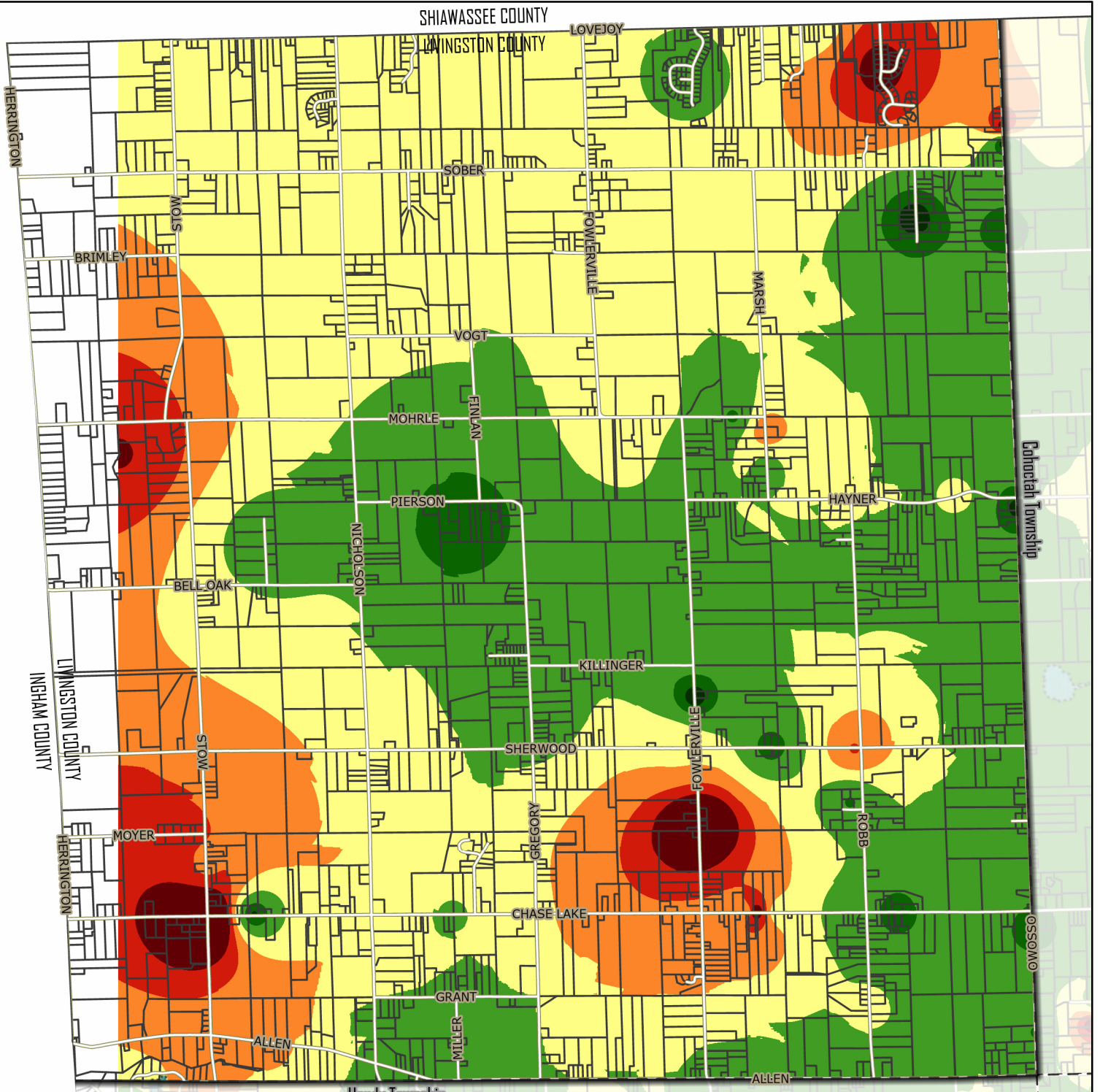


*This map depicts estimated levels of radon in Livingston County. Results from the homes tested using Livingston County Health Department (LCHD) radon test kits, produced this map. Therefore, this map is not actual representation of radon levels for all homes in Livingston County. For example, green areas do not ensure safe radon levels. LCHD recommends that all homes are tested to determine the radon level. The US Environmental Protection Agency (EPA) recommends a radon mitigation system to be installed in homes with radon levels > 4 pCi/L. For questions, call LCHD 517-546-9858. Printed: February 16, 2024



Livingston County, Michigan
 Information Technology Department
 G.I.S. Division 517.548.3230

***Estimated Radon Levels in Cohoctah Township**

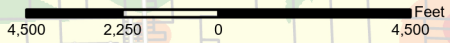


RadonLevel

pCi/L

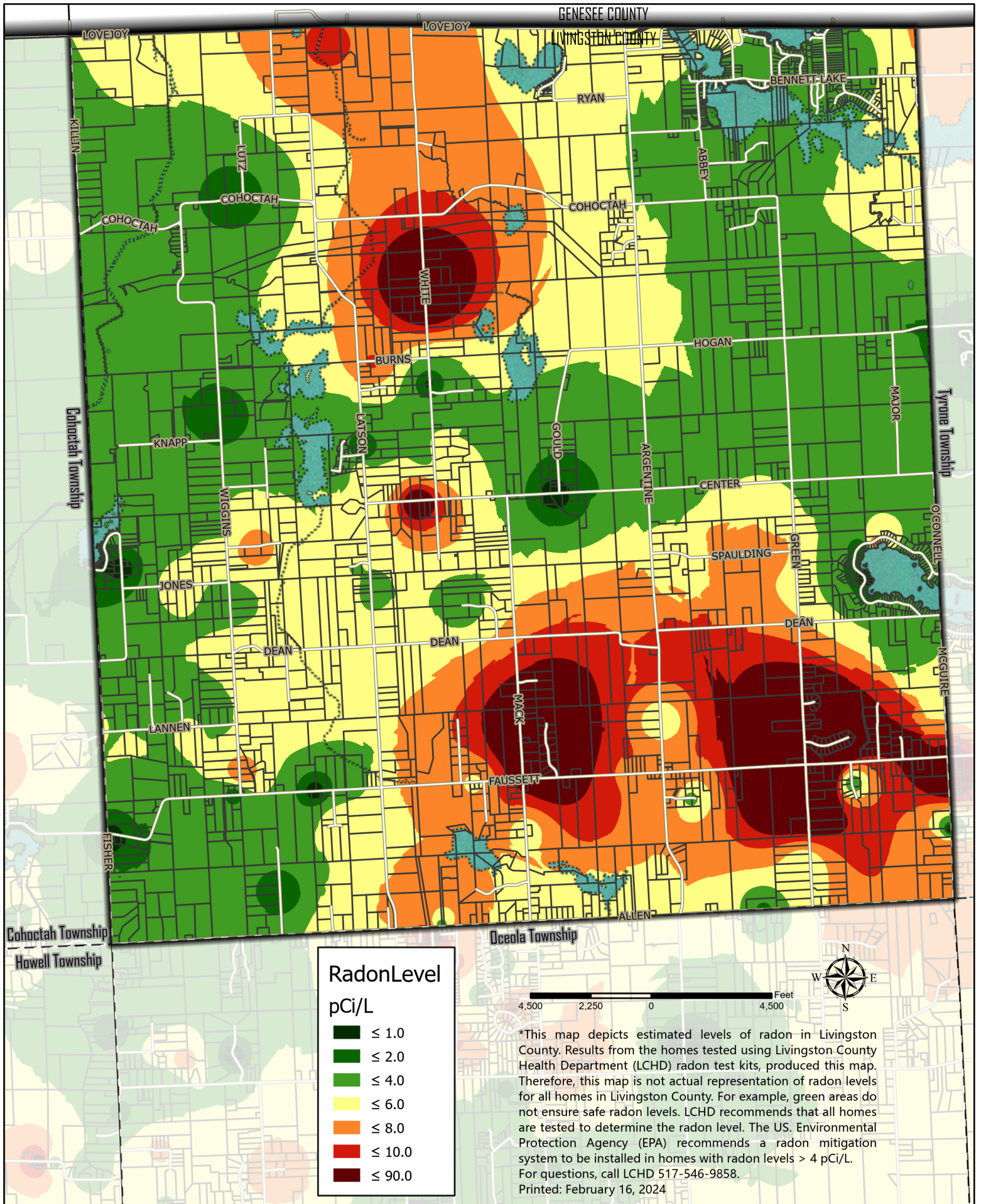
- ≤ 1.0
- ≤ 2.0
- ≤ 4.0
- ≤ 6.0
- ≤ 8.0
- ≤ 10.0
- ≤ 90.0

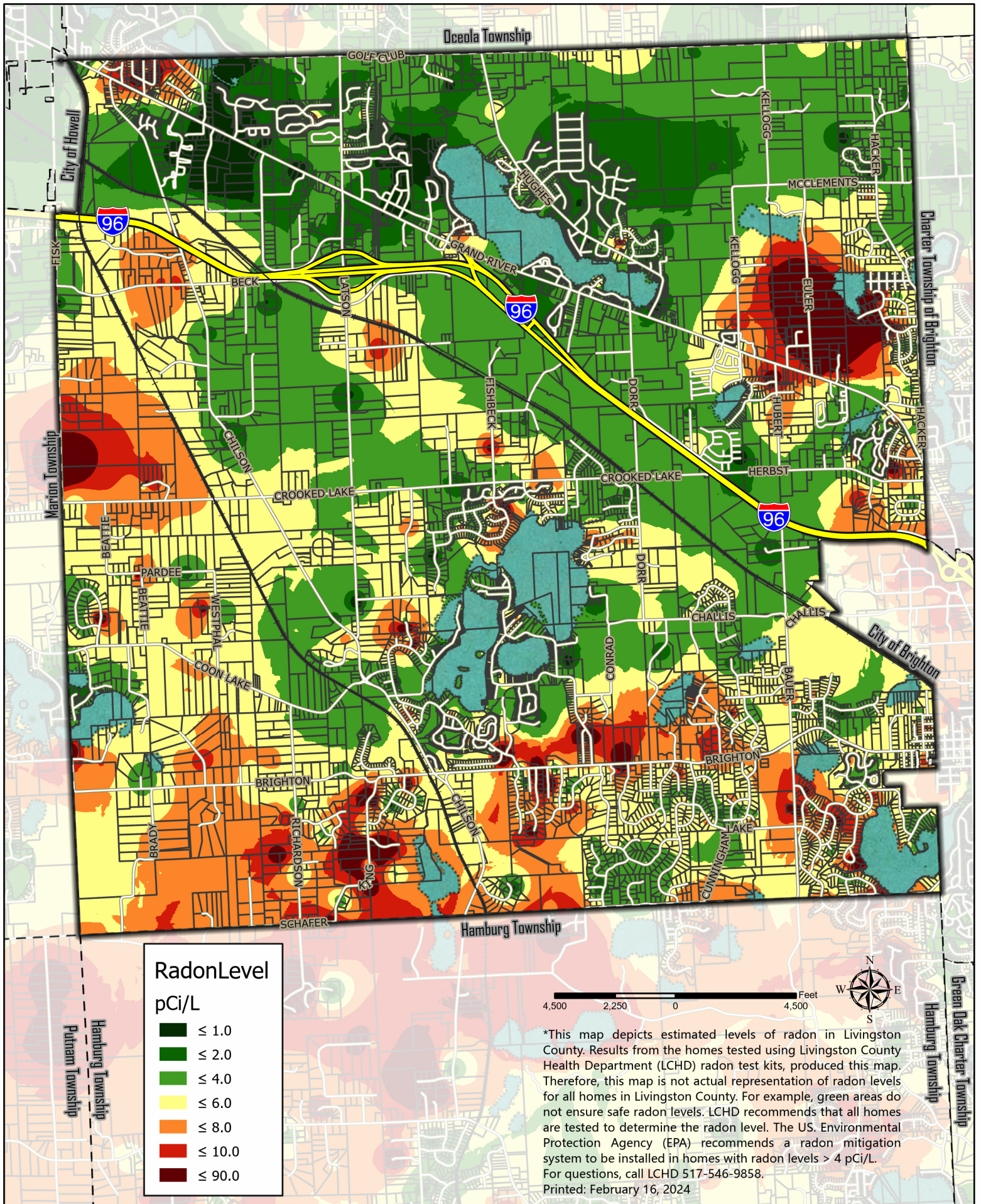
*This map depicts estimated levels of radon in Livingston County. Results from the homes tested using Livingston County Health Department (LCHD) radon test kits, produced this map. Therefore, this map is not actual representation of radon levels for all homes in Livingston County. For example, green areas do not ensure safe radon levels. LCHD recommends that all homes are tested to determine the radon level. The US Environmental Protection Agency (EPA) recommends a radon mitigation system to be installed in homes with radon levels > 4 pCi/L. For questions, call LCHD 517-546-9858. Printed: February 16, 2024

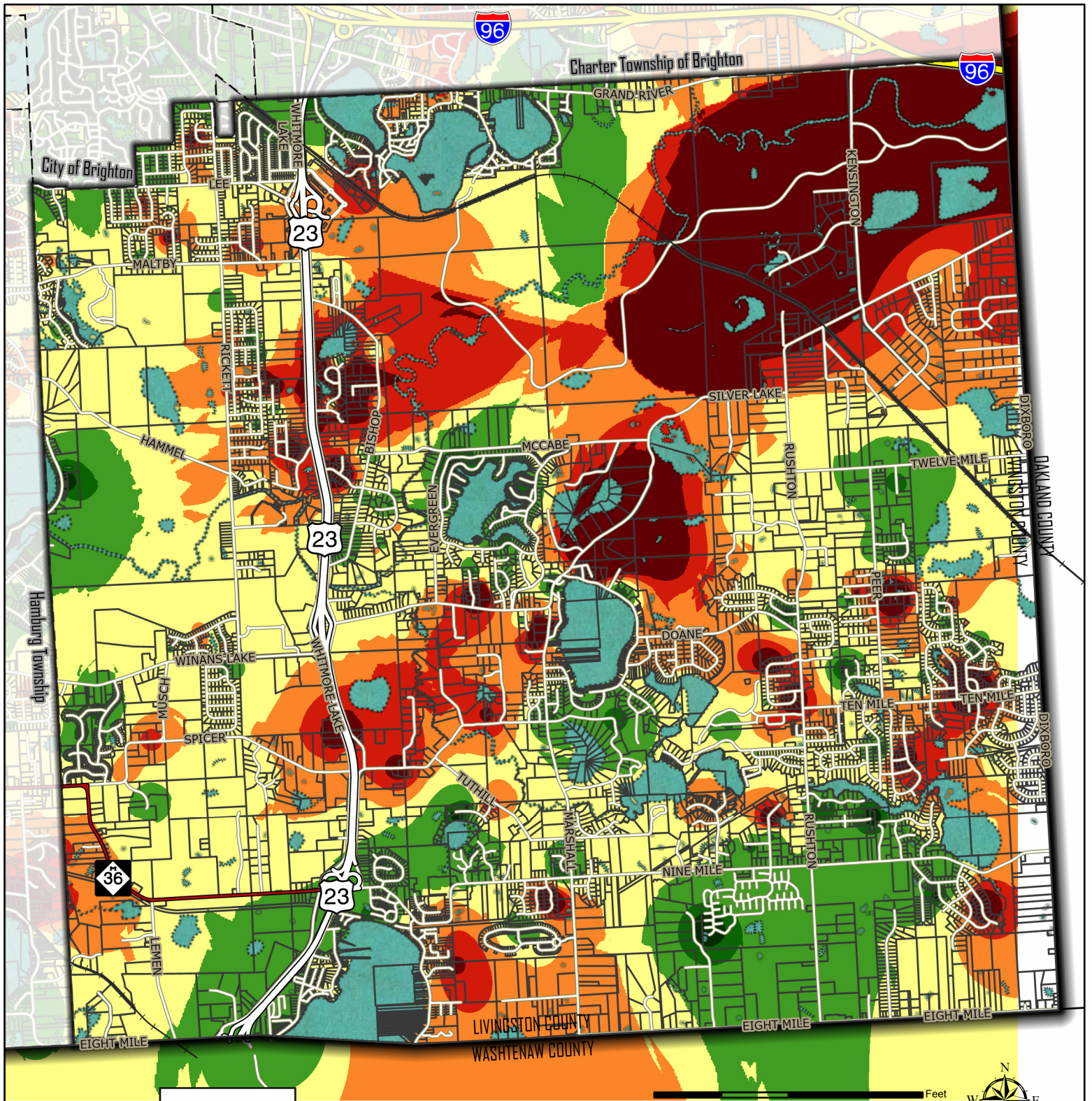


Livingston County, Michigan
Information Technology Department
G.I.S. Division 517.548.3230

***Estimated Radon Levels in Conway Township**







RadonLevel
pCi/L

Dark Green	≤ 1.0
Medium Green	≤ 2.0
Light Green	≤ 4.0
Yellow	≤ 6.0
Orange	≤ 8.0
Red	≤ 10.0
Dark Red	≤ 90.0

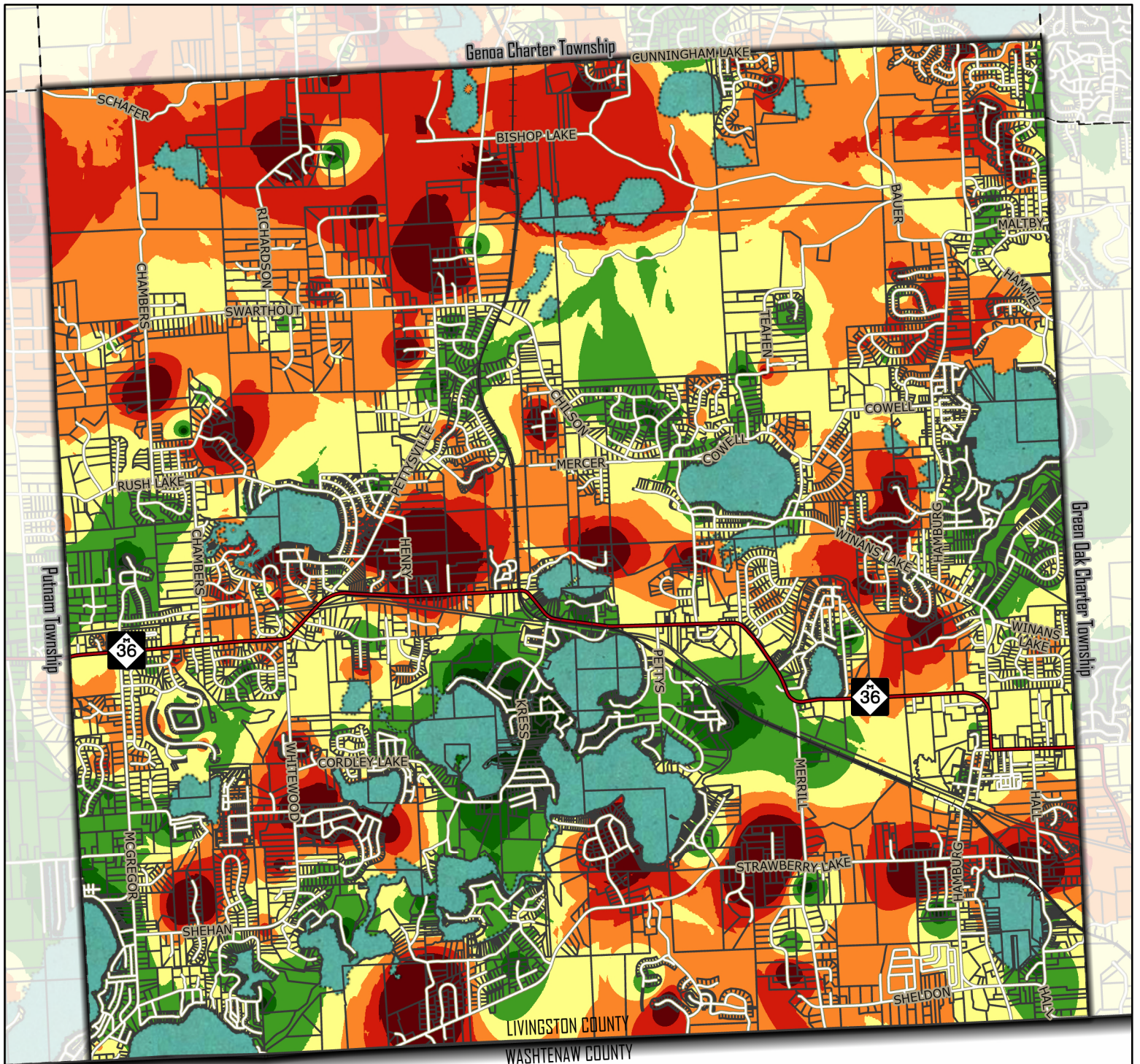









*This map depicts estimated levels of radon in Livingston County. Results from the homes tested using Livingston County Health Department (LCHD) radon test kits, produced this map. Therefore, this map is not actual representation of radon levels for all homes in Livingston County. For example, green areas do not ensure safe radon levels. LCHD recommends that all homes are tested to determine the radon level. The US. Environmental Protection Agency (EPA) recommends a radon mitigation system to be installed in homes with radon levels > 4 pCi/L. For questions, call LCHD 517-546-9858. Printed: February 16, 2024



Livingston County, Michigan
Information Technology Department
G.I.S. Division 517.548.3230

*Estimated Radon Levels in Green Oak Township



RadonLevel	
pCi/L	
	≤ 1.0
	≤ 2.0
	≤ 4.0
	≤ 6.0
	≤ 8.0
	≤ 10.0
	≤ 90.0

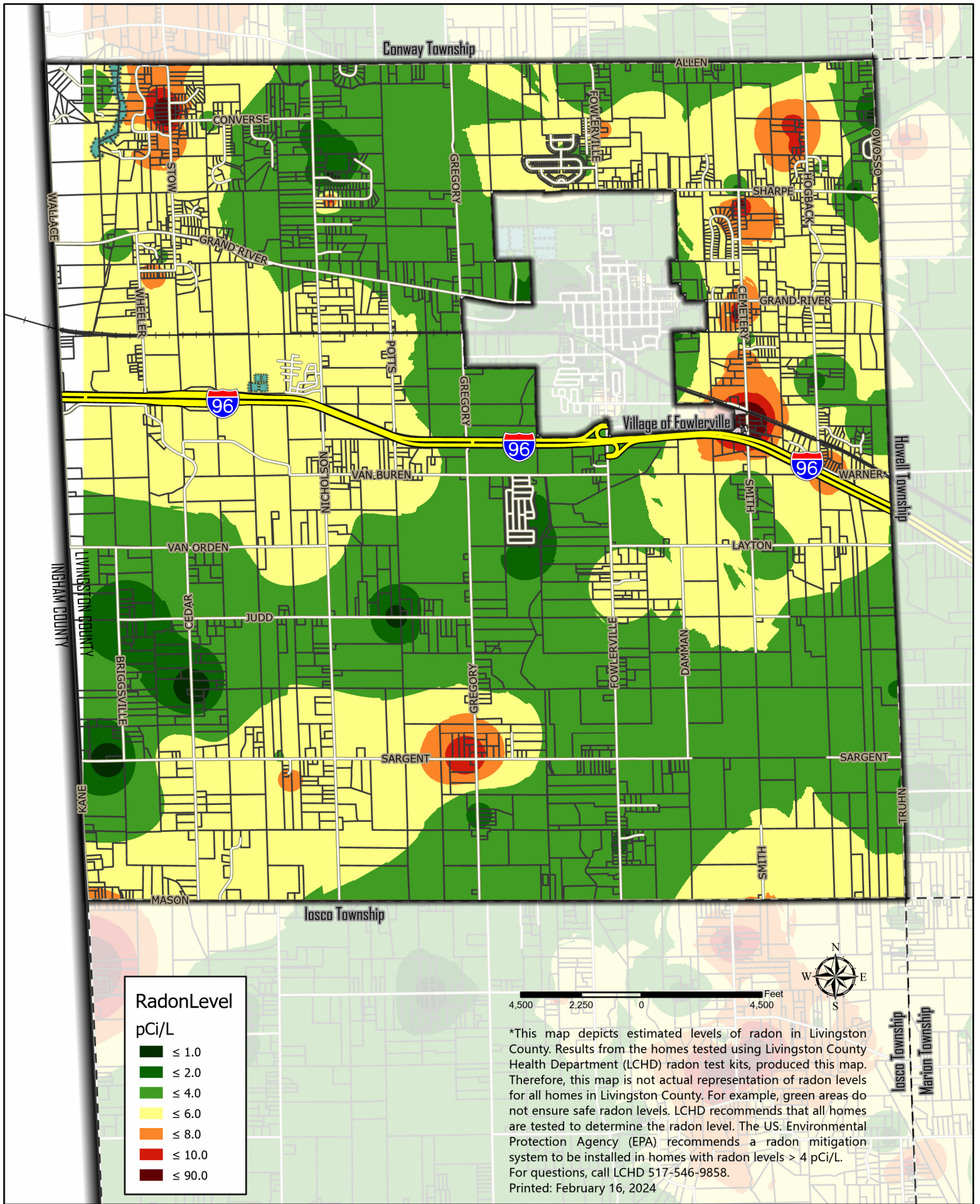


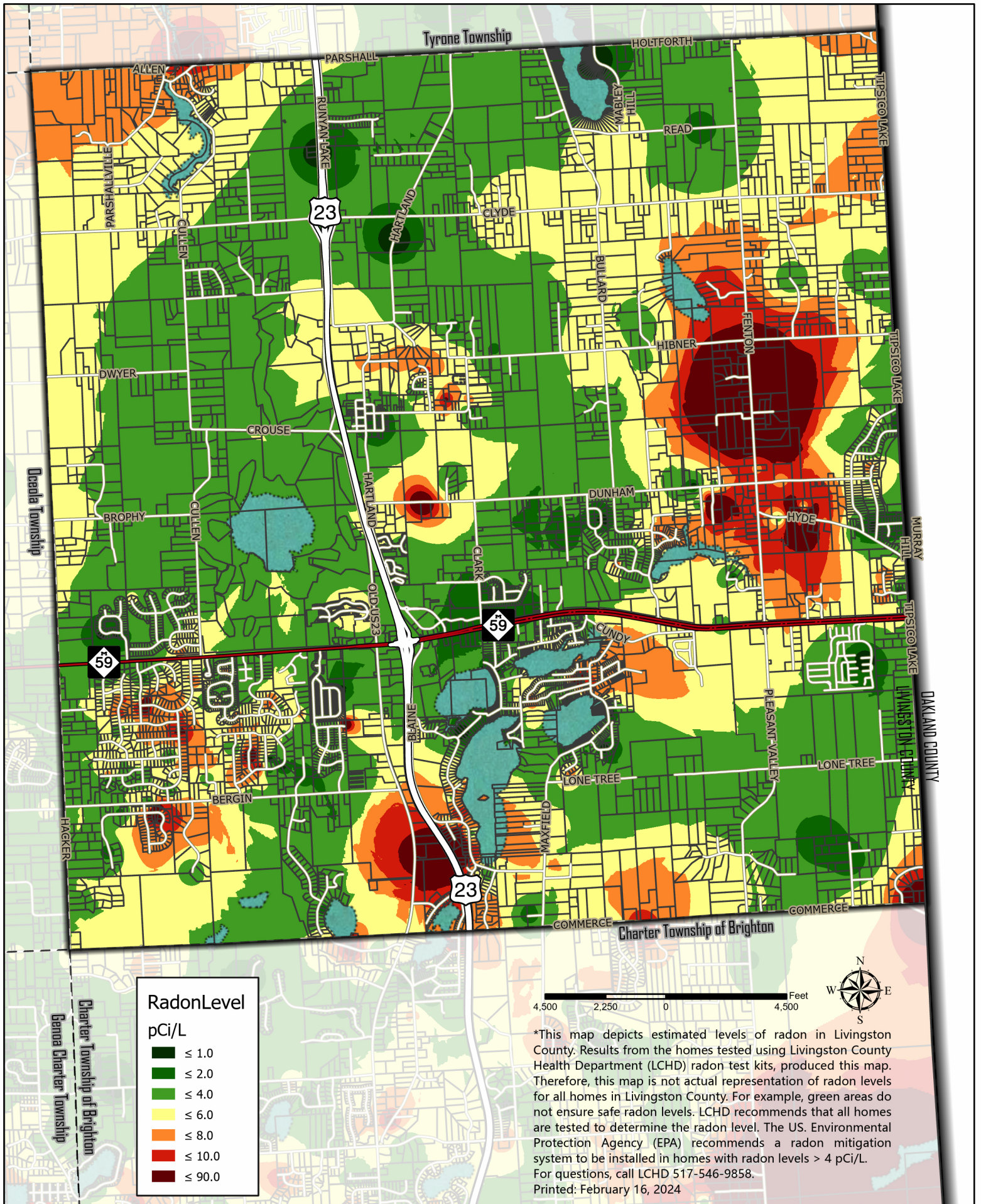
*This map depicts estimated levels of radon in Livingston County. Results from the homes tested using Livingston County Health Department (LCHD) radon test kits, produced this map. Therefore, this map is not actual representation of radon levels for all homes in Livingston County. For example, green areas do not ensure safe radon levels. LCHD recommends that all homes are tested to determine the radon level. The US. Environmental Protection Agency (EPA) recommends a radon mitigation system to be installed in homes with radon levels > 4 pCi/L. For questions, call LCHD 517-546-9858. Printed: February 16, 2024

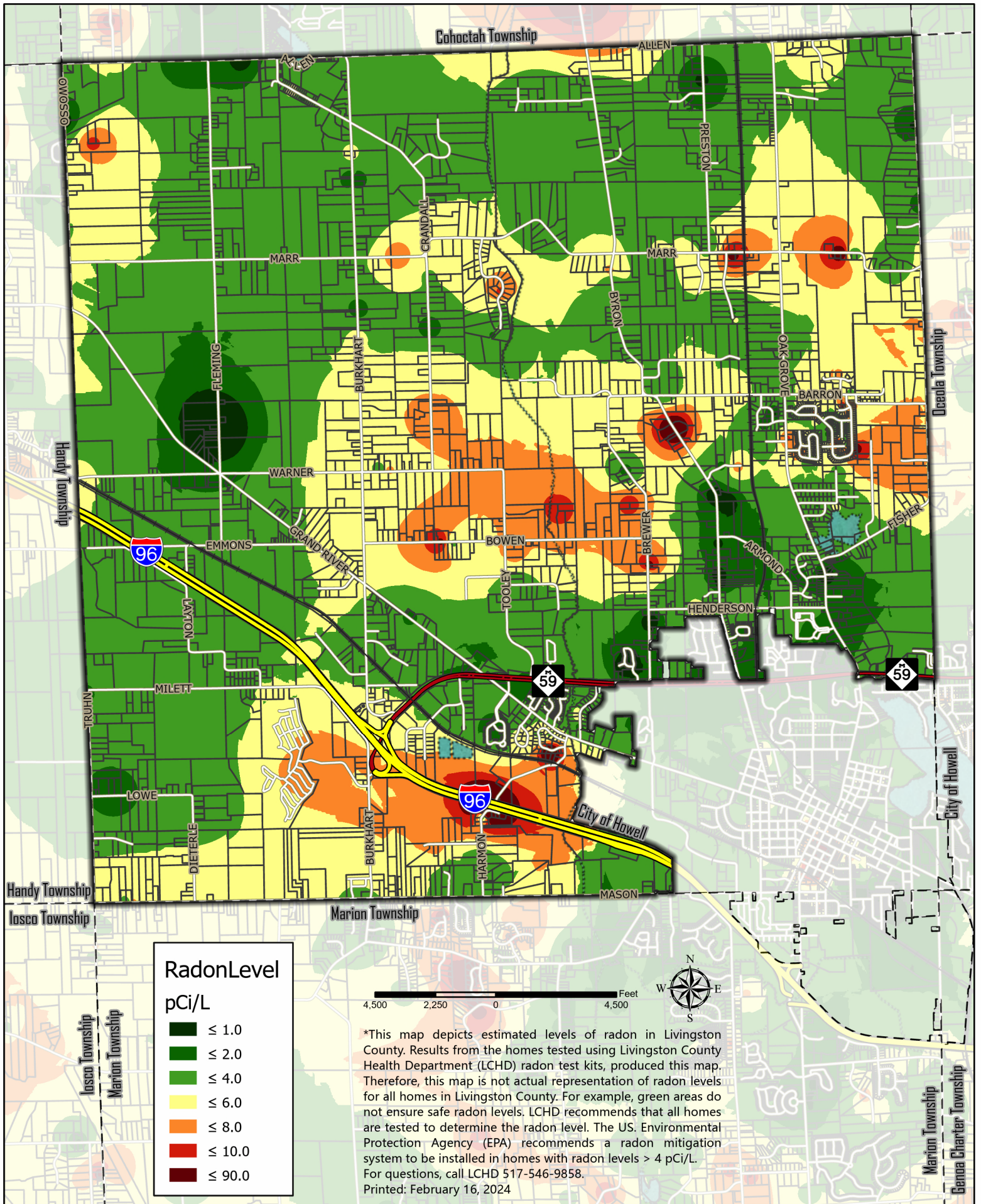


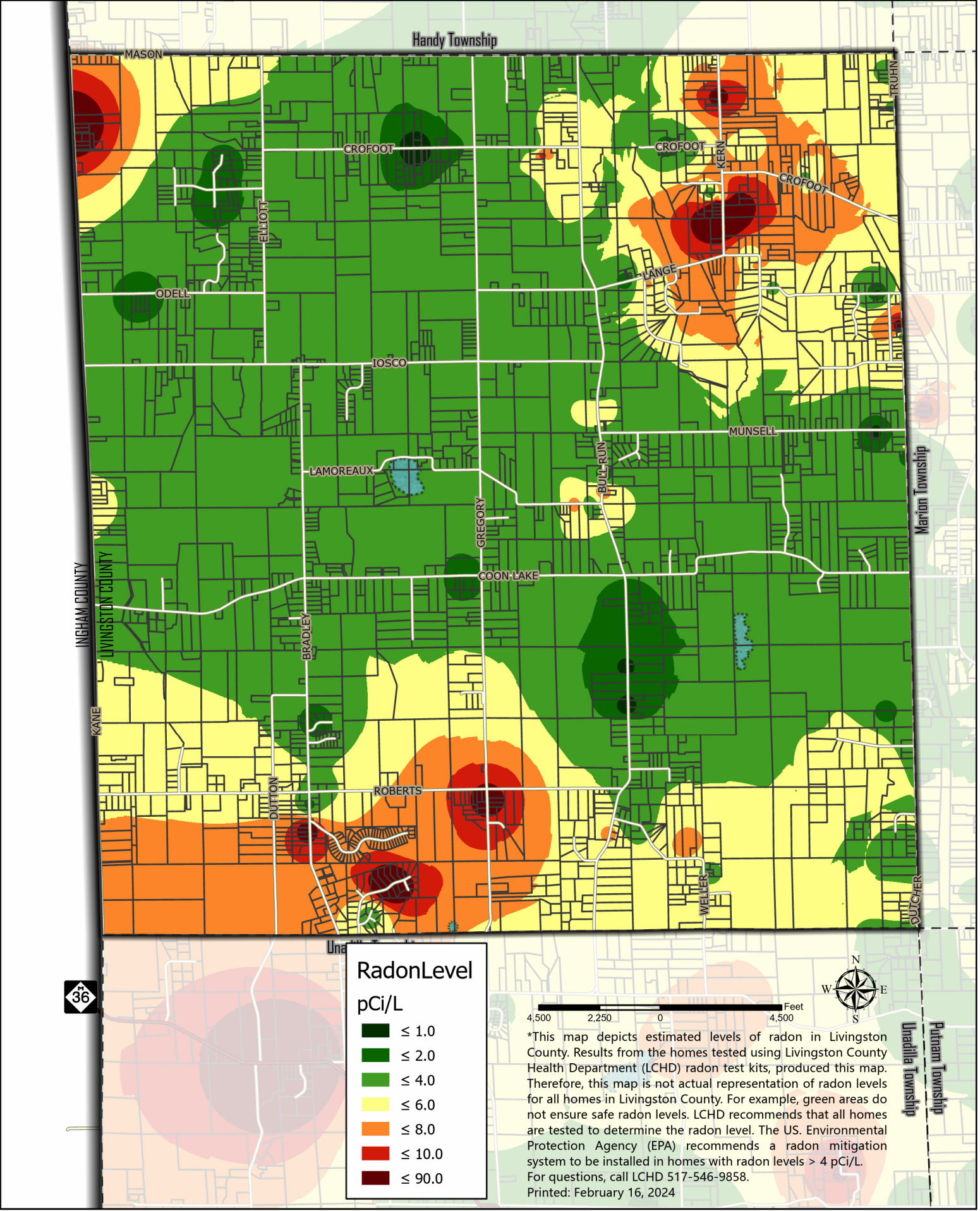
Livingston County, Michigan
 Information Technology Department
 G.I.S. Division 517.548.3230

*Estimated Radon Levels in Hamburg Township









RadonLevel
pCi/L

Dark Green	≤ 1.0
Green	≤ 2.0
Light Green	≤ 4.0
Yellow	≤ 6.0
Orange	≤ 8.0
Red	≤ 10.0
Dark Red	≤ 90.0

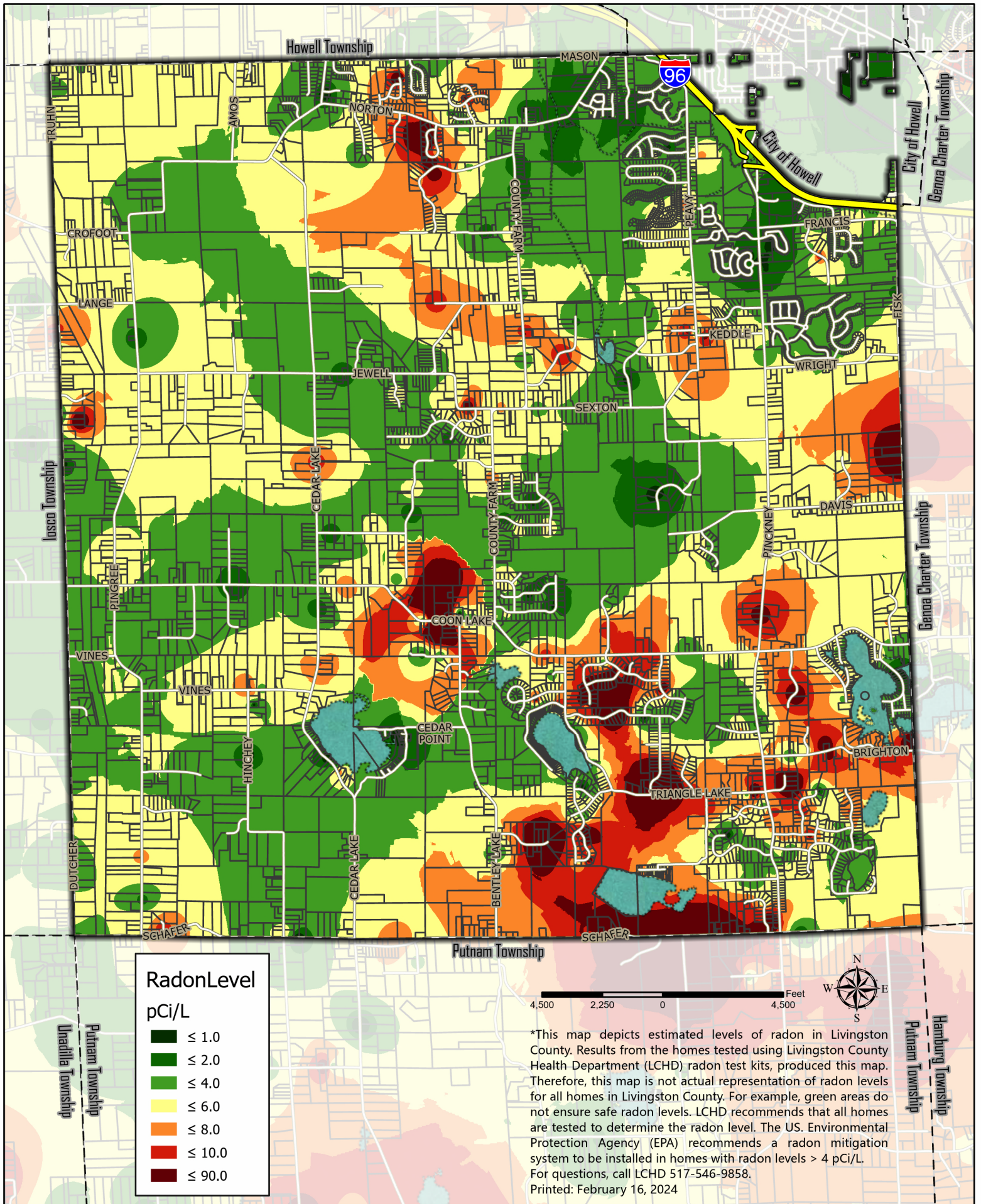


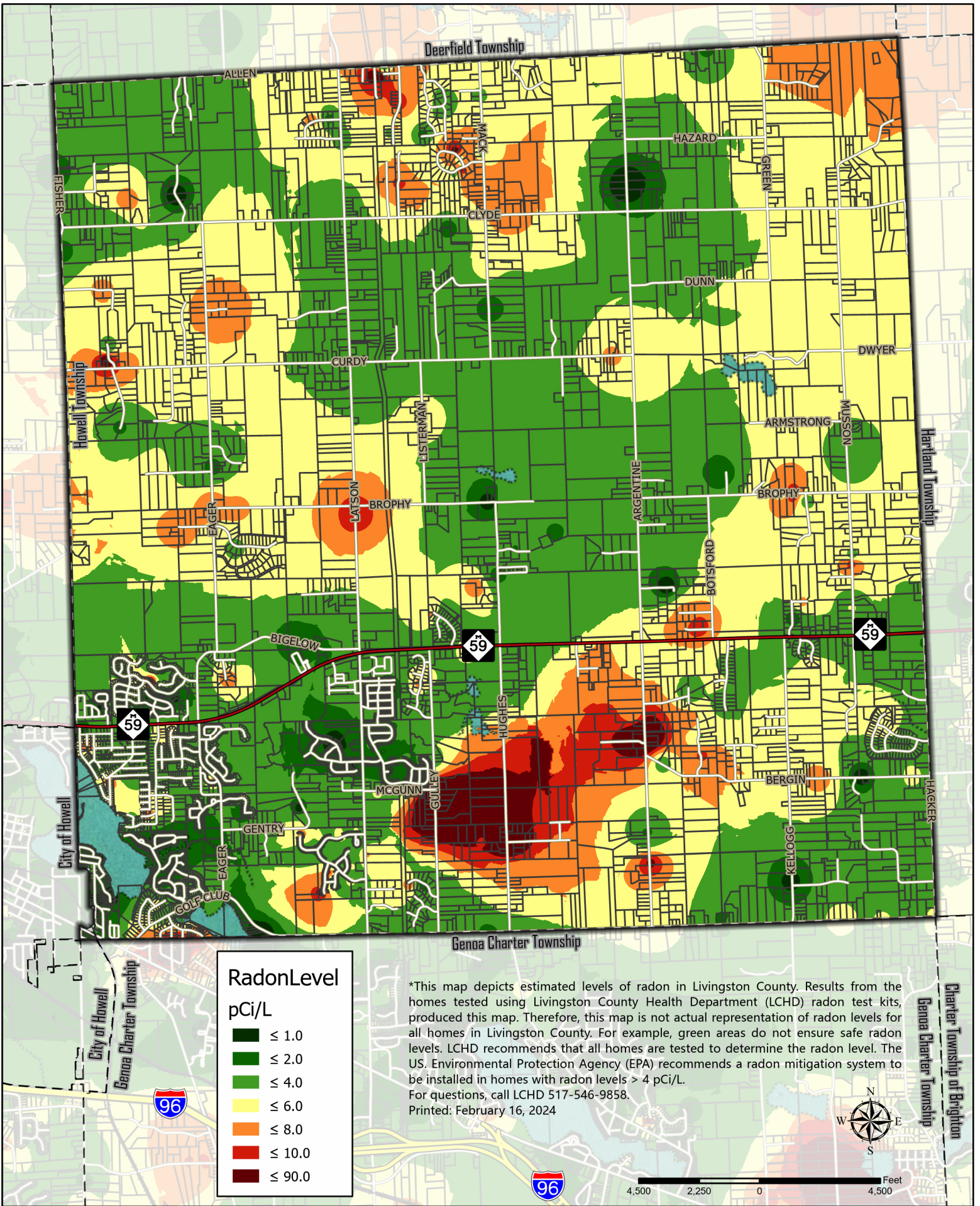
*This map depicts estimated levels of radon in Livingston County. Results from the homes tested using Livingston County Health Department (LCHD) radon test kits, produced this map. Therefore, this map is not actual representation of radon levels for all homes in Livingston County. For example, green areas do not ensure safe radon levels. LCHD recommends that all homes are tested to determine the radon level. The US. Environmental Protection Agency (EPA) recommends a radon mitigation system to be installed in homes with radon levels > 4 pCi/L. For questions, call LCHD 517-546-9858. Printed: February 16, 2024



Livingston County, Michigan
Information Technology Department
G.I.S. Division 517.548.3230

***Estimated Radon Levels in Iosco Township**





RadonLevel
pCi/L

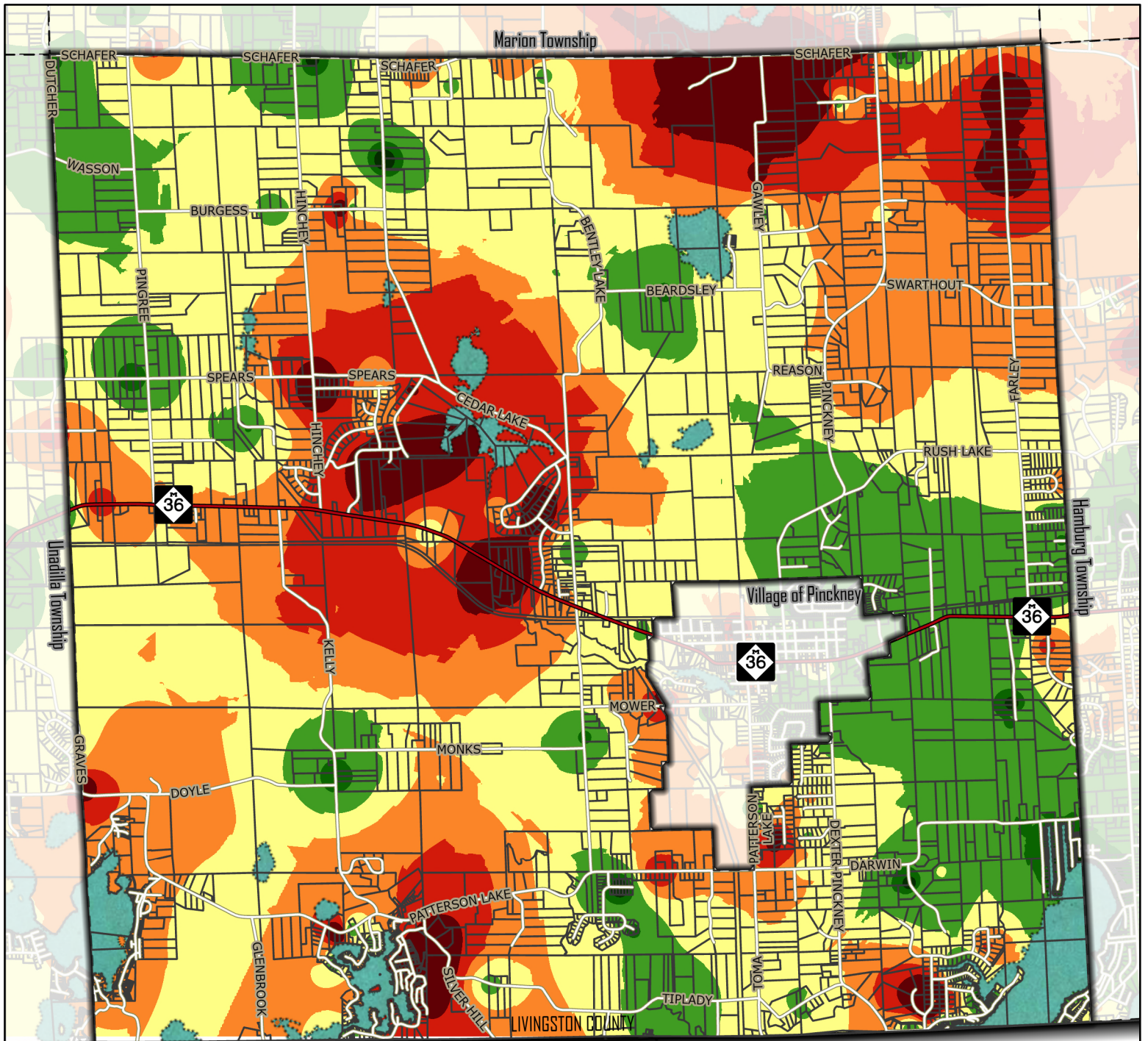
Dark Green	≤ 1.0
Green	≤ 2.0
Light Green	≤ 4.0
Yellow	≤ 6.0
Orange	≤ 8.0
Red	≤ 10.0
Dark Red	≤ 90.0




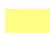



*This map depicts estimated levels of radon in Livingston County. Results from the homes tested using Livingston County Health Department (LCHD) radon test kits, produced this map. Therefore, this map is not actual representation of radon levels for all homes in Livingston County. For example, green areas do not ensure safe radon levels. LCHD recommends that all homes are tested to determine the radon level. The US Environmental Protection Agency (EPA) recommends a radon mitigation system to be installed in homes with radon levels > 4 pCi/L. For questions, call LCHD 517-546-9858. Printed: February 16, 2024



Livingston County, Michigan
Information Technology Department
G.I.S. Division 517.548.3230

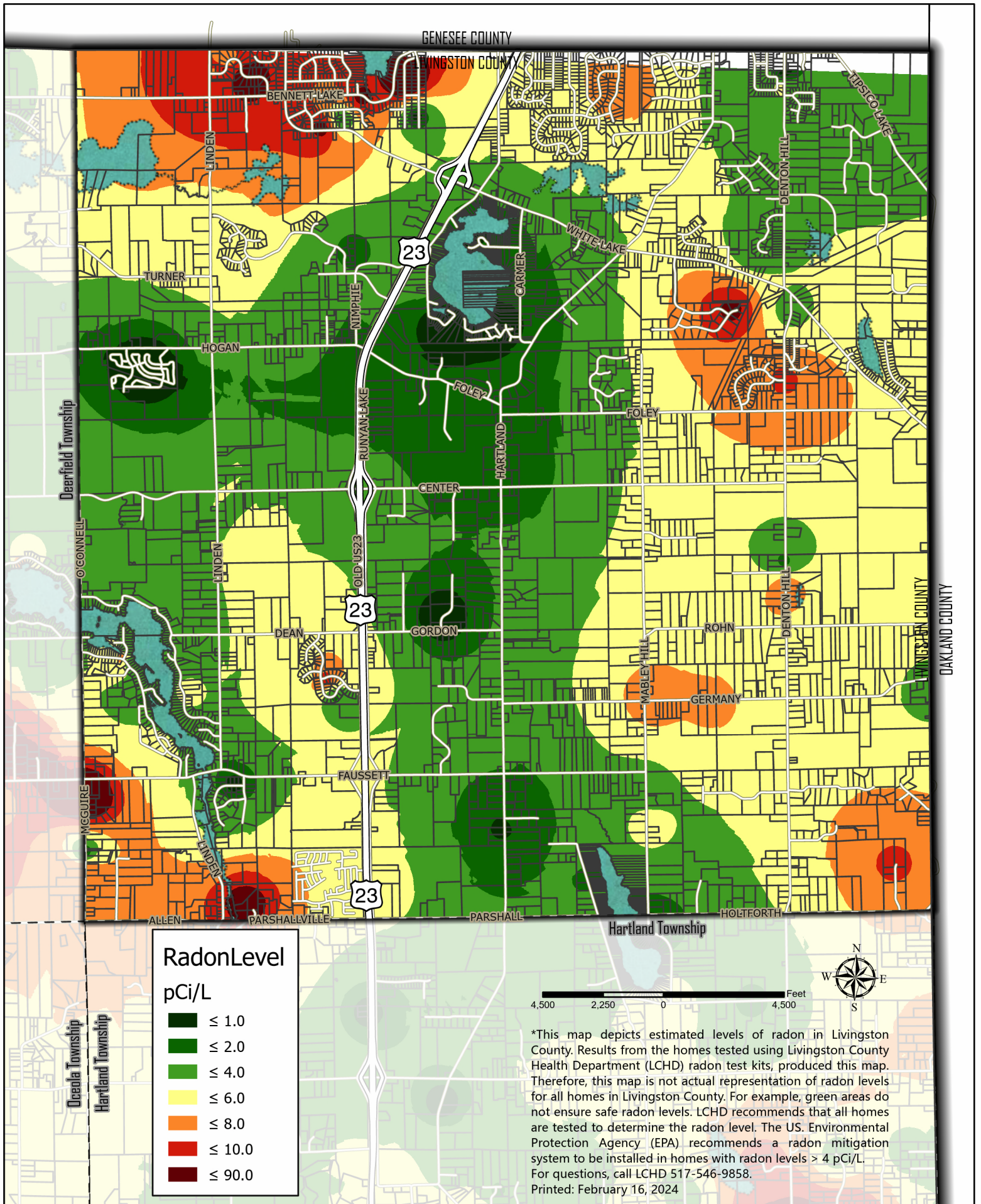
***Estimated Radon Levels in Oceola Township**



RadonLevel	
pCi/L	
	≤ 1.0
	≤ 2.0
	≤ 4.0
	≤ 6.0
	≤ 8.0
	≤ 10.0
	≤ 90.0



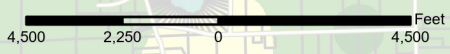
*This map depicts estimated levels of radon in Livingston County. Results from the homes tested using Livingston County Health Department (LCHD) radon test kits, produced this map. Therefore, this map is not actual representation of radon levels for all homes in Livingston County. For example, green areas do not ensure safe radon levels. LCHD recommends that all homes are tested to determine the radon level. The US. Environmental Protection Agency (EPA) recommends a radon mitigation system to be installed in homes with radon levels > 4 pCi/L. For questions, call LCHD 517-546-9858. Printed: February 16, 2024



RadonLevel

pCi/L

- ≤ 1.0
- ≤ 2.0
- ≤ 4.0
- ≤ 6.0
- ≤ 8.0
- ≤ 10.0
- ≤ 90.0

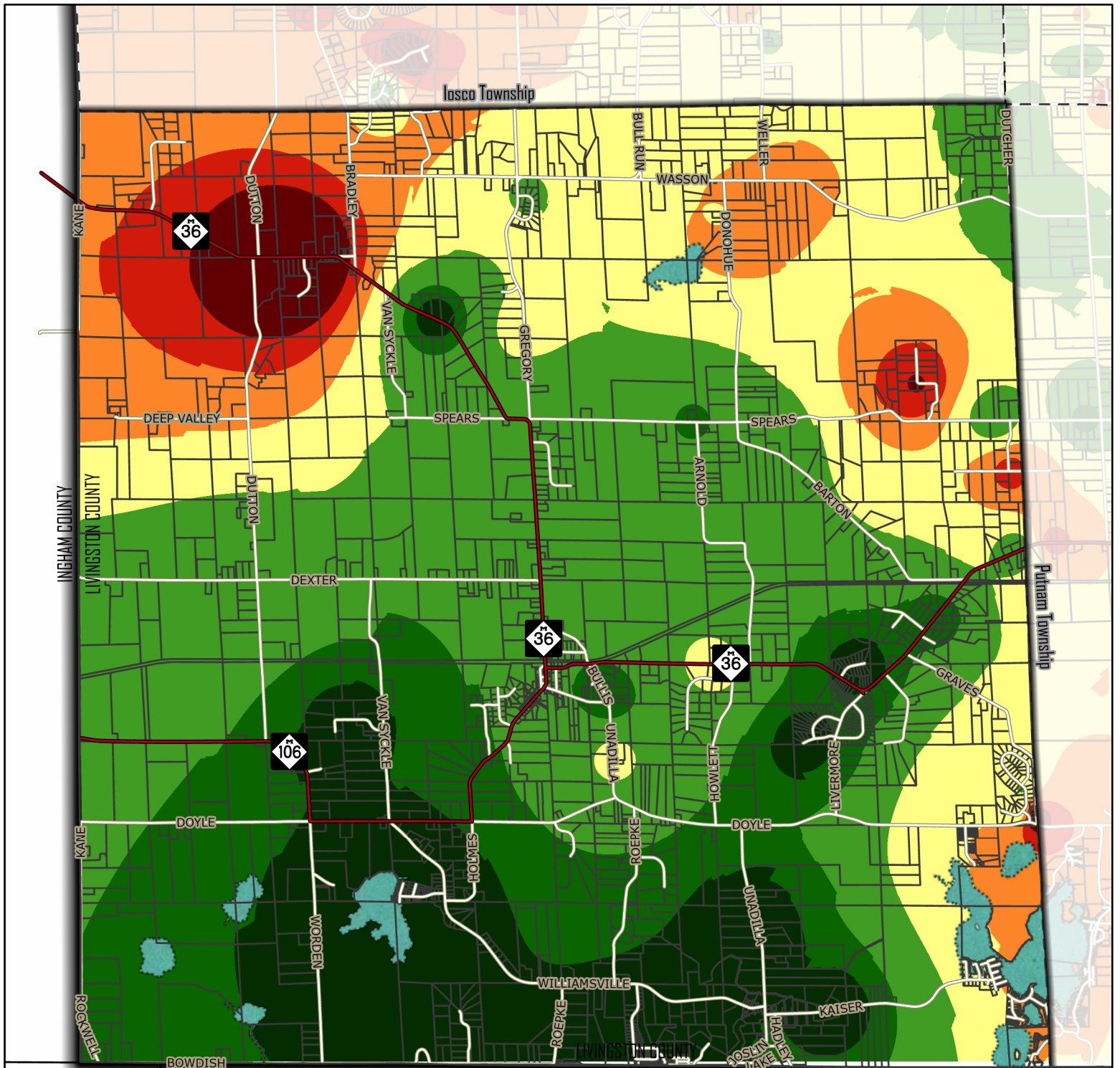


*This map depicts estimated levels of radon in Livingston County. Results from the homes tested using Livingston County Health Department (LCHD) radon test kits, produced this map. Therefore, this map is not actual representation of radon levels for all homes in Livingston County. For example, green areas do not ensure safe radon levels. LCHD recommends that all homes are tested to determine the radon level. The US. Environmental Protection Agency (EPA) recommends a radon mitigation system to be installed in homes with radon levels > 4 pCi/L. For questions, call LCHD 517-546-9858. Printed: February 16, 2024



Livingston County, Michigan
 Information Technology Department
 G.I.S. Division 517.548.3230

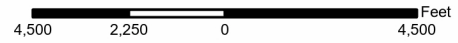
***Estimated Radon Levels in Tyrone Township**



RadonLevel

pCi/L

- ≤ 1.0
- ≤ 2.0
- ≤ 4.0
- ≤ 6.0
- ≤ 8.0
- ≤ 10.0
- ≤ 90.0

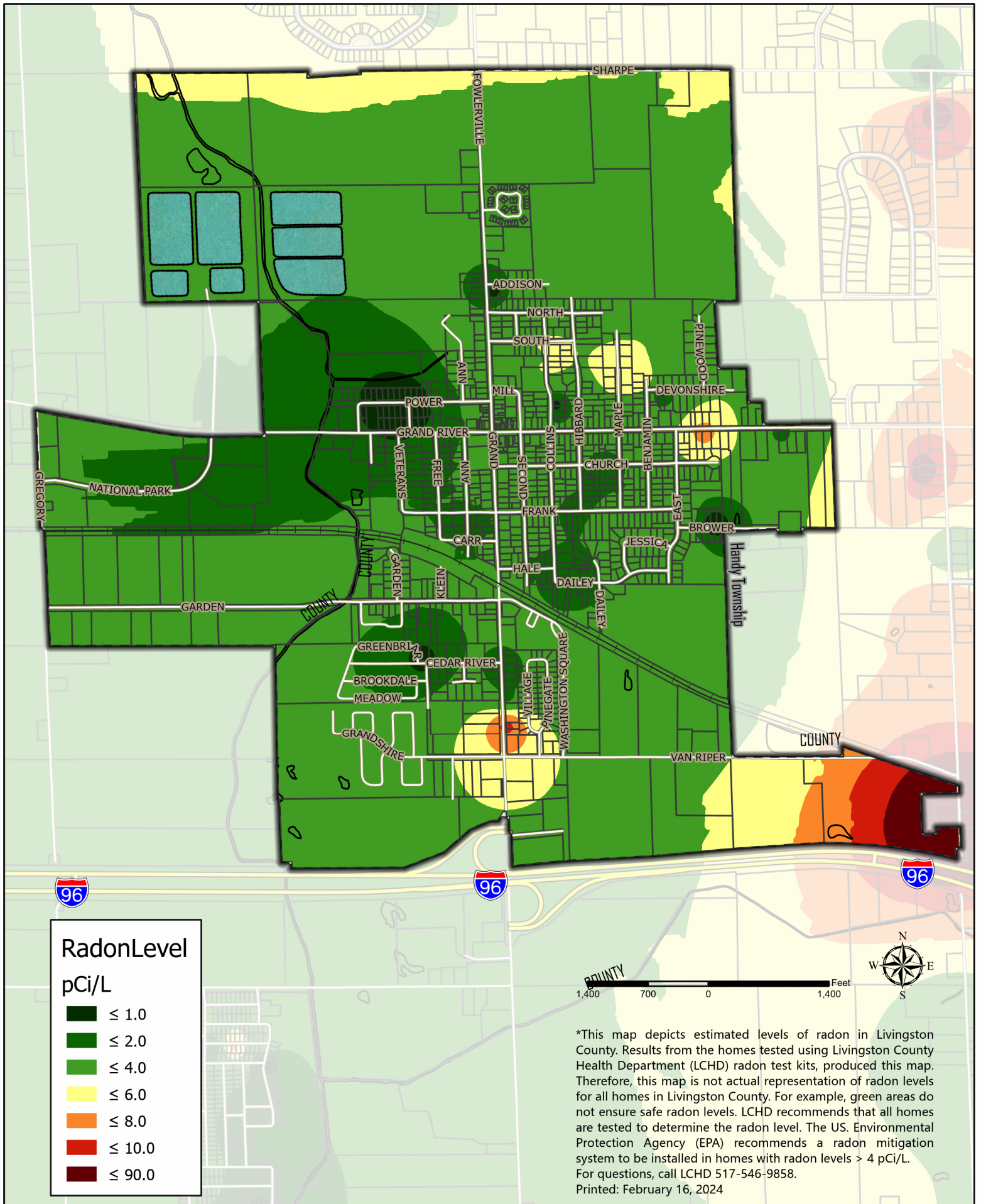


*This map depicts estimated levels of radon in Livingston County. Results from the homes tested using Livingston County Health Department (LCHD) radon test kits, produced this map. Therefore, this map is not actual representation of radon levels for all homes in Livingston County. For example, green areas do not ensure safe radon levels. LCHD recommends that all homes are tested to determine the radon level. The US. Environmental Protection Agency (EPA) recommends a radon mitigation system to be installed in homes with radon levels > 4 pCi/L. For questions, call LCHD 517-546-9858. Printed: February 16, 2024



Livingston County, Michigan
 Information Technology Department
 G.I.S. Division 517.548.3230

***Estimated Radon Levels in Unadilla Township**



RadonLevel

pCi/L

- ≤ 1.0
- ≤ 2.0
- ≤ 4.0
- ≤ 6.0
- ≤ 8.0
- ≤ 10.0
- ≤ 90.0

*This map depicts estimated levels of radon in Livingston County. Results from the homes tested using Livingston County Health Department (LCHD) radon test kits, produced this map. Therefore, this map is not actual representation of radon levels for all homes in Livingston County. For example, green areas do not ensure safe radon levels. LCHD recommends that all homes are tested to determine the radon level. The US. Environmental Protection Agency (EPA) recommends a radon mitigation system to be installed in homes with radon levels > 4 pCi/L. For questions, call LCHD 517-546-9858. Printed: February 16, 2024



Livingston County, Michigan
 Information Technology Department
 G.I.S. Division 517.548.3230

***Estimated Radon Levels in Village of Fowlerville**

